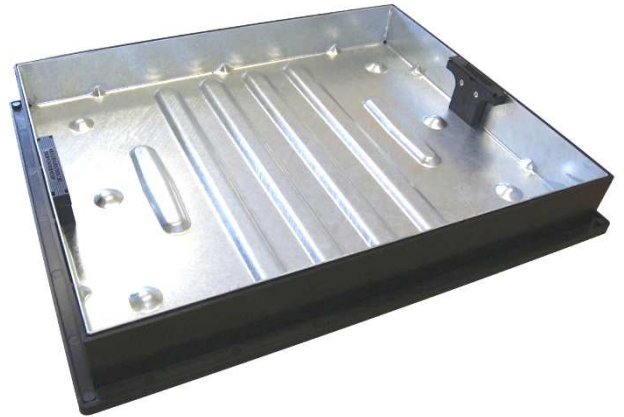




Technical Specification/ Product Datasheet



TopCovers Ltd.,
66 Earl Street,
Maidstone,
Kent,
ME14 1PS.
England.

Specific Product Codes: C-21
Product Group: Steel Manhole Covers
Sub-Category: Recessed
Material Grade/s: Mild Steel to BS EN 1449:1991/EN 10025:2004
Galvanising to BS EN 1461:2009
Polypropylene Grade AP9 (frame only)

Basic Dimensions (mm):	C-21	C-21/80 600
Clear-opening =	600 x 450	x 450 695 x
Overall size =	695 x 545	545
Internal tray depth =	65	80
Overall depth =	78	96

Weight (kgs):
CD 790R = 12
CD 790R/80 = 14.5

Load Rating Classification: 10T GPW
Applicable Standard(s): FACTA (clauses no. 7.0, 7.2, 7.2.1, 7.2.3 & 7.3.3)
Load Test Data: 25kN held for 30 secs

Features:

- Domestic driveway loading
- Integral lifting keys, tested to withstand 120kgs direct lift each
- Fully galvanised tray
- Moulded grouting flange
- Quick & easy to install
- Ideal for paved driveways

Date Issued: 15/05/18